

You are only a double click from the latest solution. Qwood's commitment to innovation has led to the expert development of the new patented (GB1520433.2) Qclick system.

Required Profile:

QW-SC1

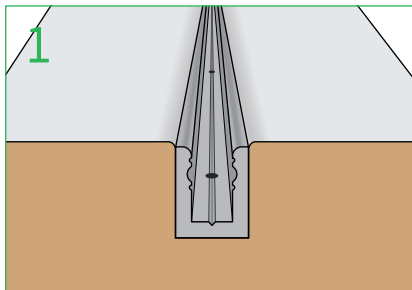
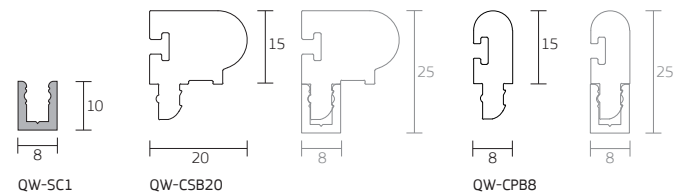
QW-CSB20

QW-CPB8

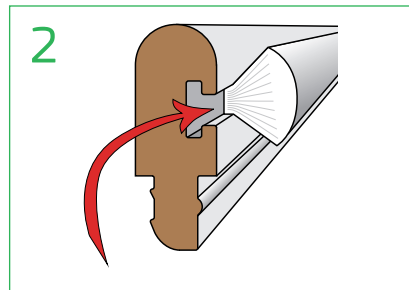
Sash Clip

Clip-in 20mm staff bead

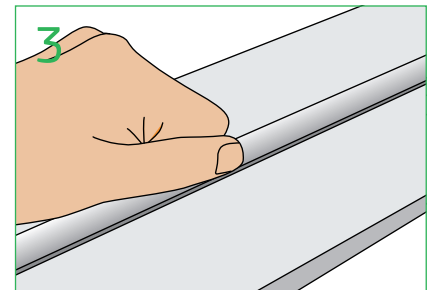
Clip-in 8mm parting bead



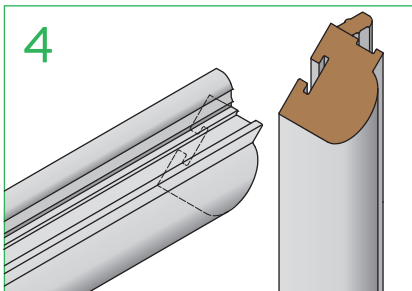
Machine grooves into sash frame to accept clip profile. Fit clip (QW-SC1) into groove, secure using pins or staples.



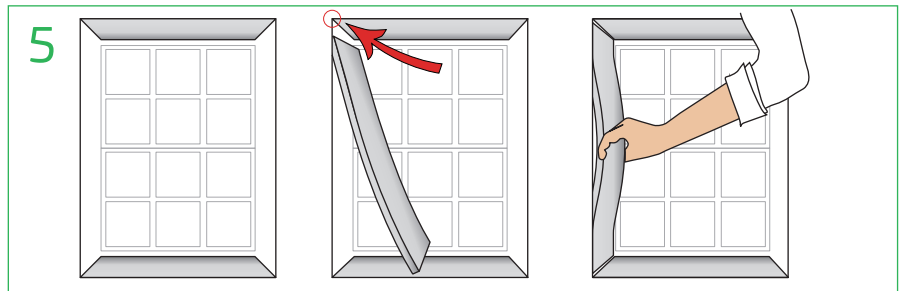
Cut parting bead to size. Slide seal (supplied separately) into finished parting bead (QW-CPB8).



Fit inner sash, fit in parting bead (QW-CPB8) into clip profile (QW-SC1). Push and tap down until you hear the click.



Measure sash frame and cut staff bead to size. Mitre cut top, bottom and side bead.



Fit outer sash, fit top and bottom staff bead (QW-CSB20) into clip profile (QW-SC1). Push and tap down until you hear the click.

Locate top end of side bead into clip profile and push upward into corner mitre joint.

Bend centre of bead by hand and locate opposite end into clip profile at bottom corner mitre. Allow bead to snap back and tap down entire length until you hear the click. Repeat on other side.

KEY BENEFITS INCLUDE:

- » Easy to install – cut your groove, fit the clip channel, and click your beads in place
- » Secure one-way removal of beading
- » Remove your sashes for maintenance without damage to your window and beading
- » No unsightly troublesome pin holes to fill

If you require any further information or assistance with the fitting of any Qwood product, please contact us:
+44 (0) 161 627 4222
info@qwood.co.uk
www.qwood.co.uk