

The Rain Deflector profile can be painted before or after fitment.

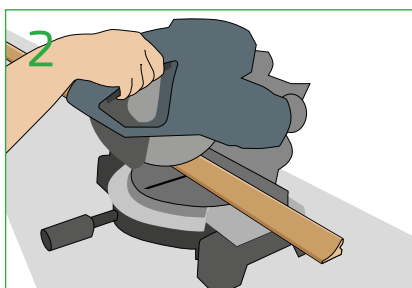
Required Profiles:

QW-RD40

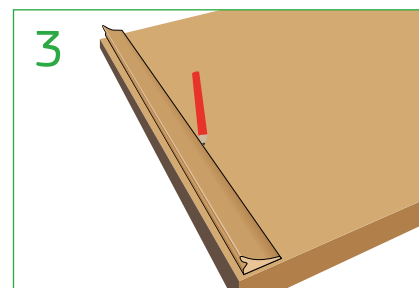
External Door Rain Deflector Bead



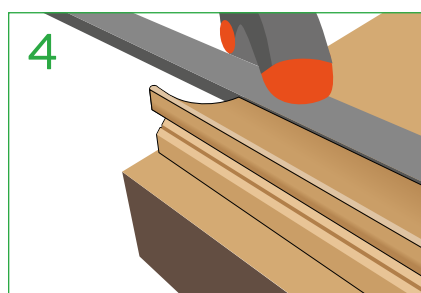
Lay door on a horizontal surface at a safe height to work. The outer surface to be fitted with the Rain Deflector uppermost. Measure the width of the door and allow for the jambs when the door is in the closed position.



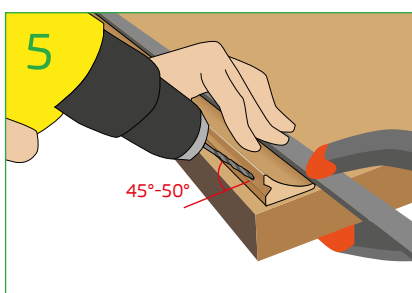
Cut the Rain Deflector profile to the required length, and if outward opening, consider cutting the hinge end at an angle for clearance.



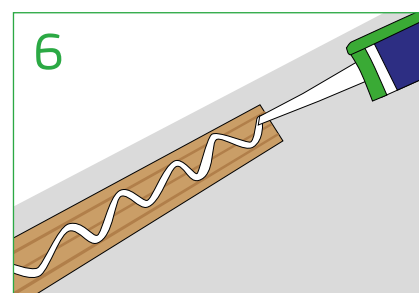
Place the Rain Deflector in the desired position at the foot of the door. Its distance from the bottom of the door should take into account the sill height and door close position (open-in or open-out). Mark the door along the top-side of the Rain Deflector.



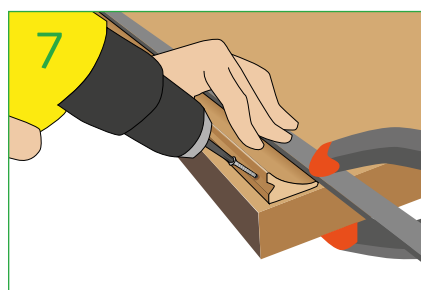
Place the Rain Deflector in position and secure with clamps. Alternatively, clamp a straight edge along the top edge of the Rain Deflector. This can help keep the Rain Deflector in position whilst drilling and screw fixing.



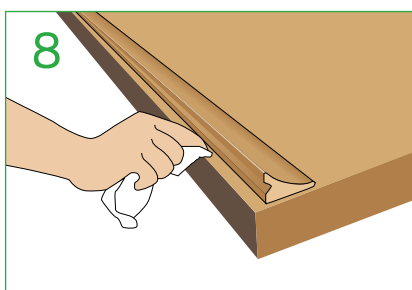
On the underside of the Rain Deflector pre-drill and counter sink angled (45–50° towards the door surface) pilot holes along the screw groove in the profile. Holes should be 25 mm from each end and spaced equally in between at centres of no more than 200 mm. A minimum of 5 fixings per standard door width is recommended.



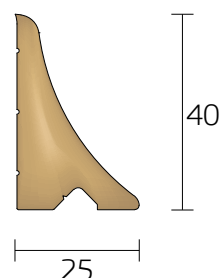
Ensure the mating surfaces of the door and Rain Deflector are clean and free from dust or grease. Apply a generous bead of waterproof external cartridge adhesive to the mating surface(s) in accordance with the adhesive manufacturers' guidelines.



Mechanically secure the Rain Deflector to the door with 4 mm x 40 mm (no. 8 x 1½) screws. The angled screw fixings will ensure a positive seal between the top lip of the Rain Deflector and the door surface.



Remove the clamps (and straight edge if used) and wipe off any residual adhesive with a damp cloth.



QW-RD40