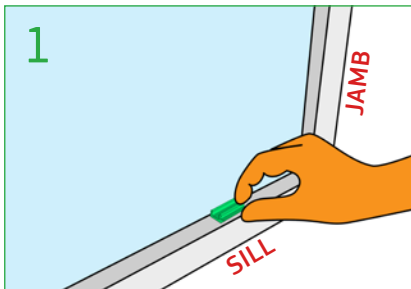


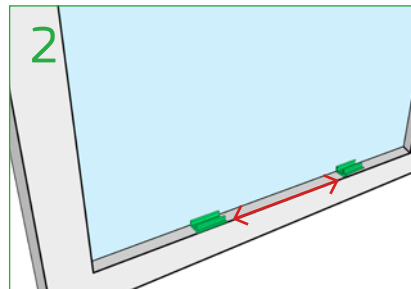
The Qwood standard range of glazing and drip beads offer a quick and effective method of dry glazing a casement window.

Required Profiles:

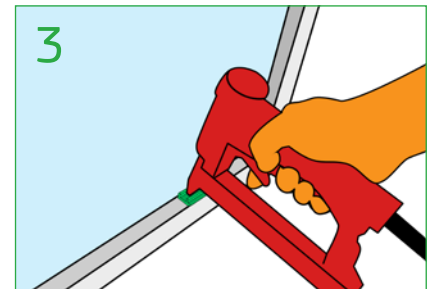
QW-GB1	Glazing bead
QW-GBC1	Glazing bead fixing clip
QW-DB1	Bottom drip bead
QW-DBC1	Bottom drip bead fixing clip



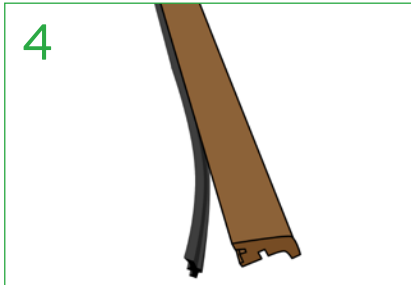
1
Fit glass panel to frame as required. Place DBC1 and GBC1 against the glass ensuring that they are in the correct orientation. See illustration above.



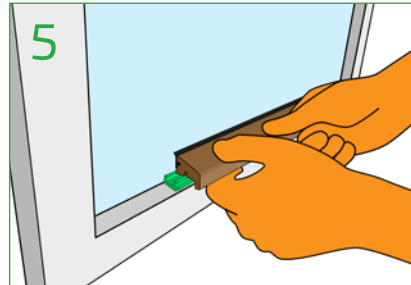
2
Ideal clip length is 35mm and 50mm (but longer lengths can be used if required). We recommend clips should be spaced at 150mm intervals. The more clips used, the stronger the fixing.



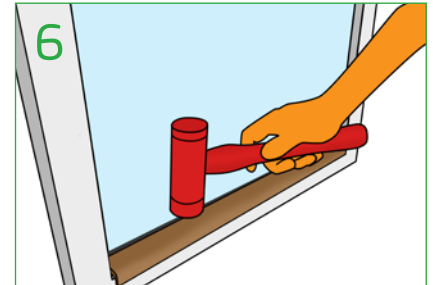
3
The clips can be fixed using staples, screws or pins. We recommend to use 2 x 80 series staples 12mm (or longer if preferred) per clip. With the air gun regulators set at approximately 4 bar. Ensure fixings do not protrude into clip channel and foul bead fitment.



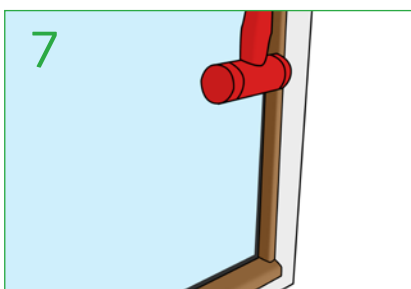
4
Measure and straight cross cut DB1 to meet the jambs. Then fit gasket to bead gasket slot in the profile. Ensure gasket allows a minimum gap of 2mm uncompressed.



5
Offer DB1 bottom bead to clips. Angle in from one side to ease onto the clips.



6
Once the bead is in the desired position on the clips, use a small glazing mallet to tap down into the final location. Check the bead is firmly located, it should not be able to be removed using your fingers.



7
Repeat stages 4-6 with GB1.

- Side GB1 beads can be cut to 22° to fit flush with the bottom bead and top rail (see illustration).
- GB1 side and top can be mitre cut joined if preferred.

Suggested Gaskets:

QW-GB1, QW-GB2, QW-DB1, QW-DB2, QW-DB3 are compatible with recommended gaskets RT2 (Exitex) and S317E (Trelleborg).

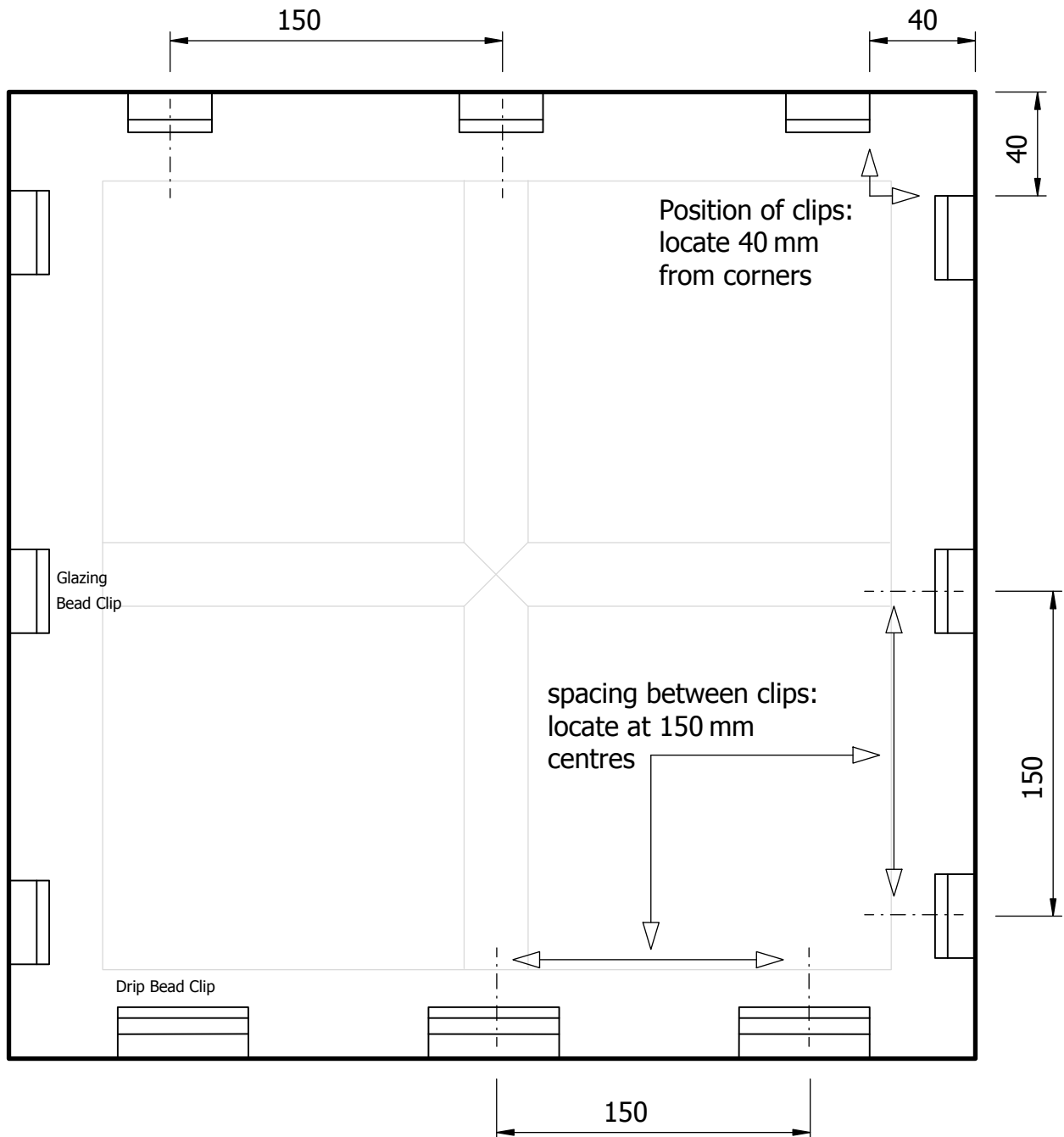
If you require any further information or assistance with the fitting of any Qwood product, please contact us:

+44 (0) 161 627 4222

info@qwood.co.uk

www.qwood.co.uk

Clip position and spacing recommendation:



Recommendations for dark colours:

- » Clip spacing at 150mm centered
- » Apply pin to the outmost edges of each bead to aid stability
- » Where possible pin beads down in concealed places

If you require any further information or assistance with the fitting of any Qwood product, please contact us:
+44 (0) 161 627 4222 info@qwood.co.uk www.qwood.co.uk