

Qwood - Product Drawing

Quantum Profile Systems Ltd.
Salmon Fields, Royton, Oldham, Lancashire, OL2 6JG
Tel: 0161 627 4222 Fax: 0161 627 4333 email: info@quantum-ps.co.uk



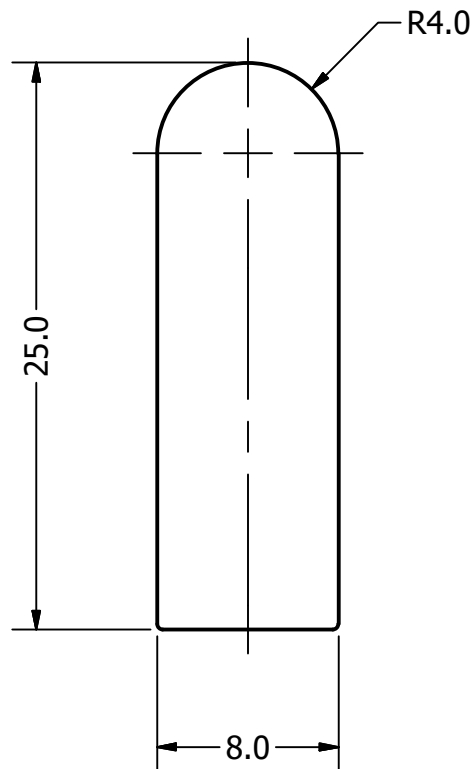
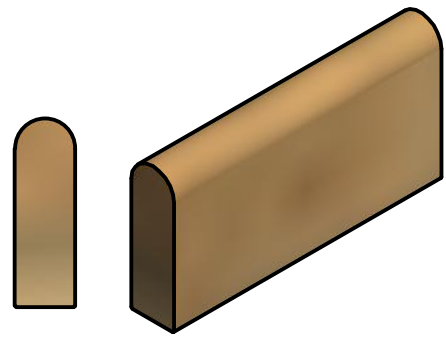
Unspecified tolerances:
All dimensions are in millimeters
unless otherwise stated.
Unspecified Radii 0.2mm

Holes +/- .1mm
Angles +/- .5 Deg
Radii +/- .2mm

No. Dec Places +/- .5mm
1 Dec Place +/- .2mm
2 Dec Places +/- .1mm

All dimensions based on
customer DWG file or
on customer sample profile
with dimensions rounded
to hundredth mm.

SCALE 1 : 1



Product: QW-PB8NI - non integrated brush pile channel

Scale: 3:1

Material: WPC



This drawing should be used for illustration purposes only. It can not be used as a specification of the part.
For more information please call +44 (0) 161 627 4222 or mailto CustomerService@quantum-ps.co.uk
Copyright © 2015 Quantum Profile Systems Limited. All rights reserved.

Date: 23/04/2019
Author: diane.luther
File: OW-PB8NI.ipt