

# Qwood - Product Drawing

Quantum Profile Systems Ltd.  
Salmon Fields, Royton, Oldham, Lancashire, OL2 6JG  
Tel: 0161 627 4222 Fax: 0161 627 4333 email: info@quantum-ps.co.uk



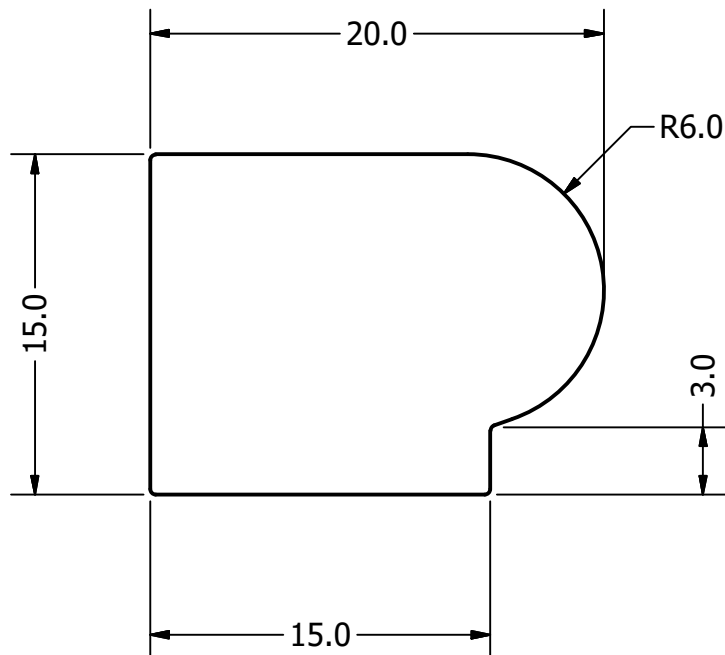
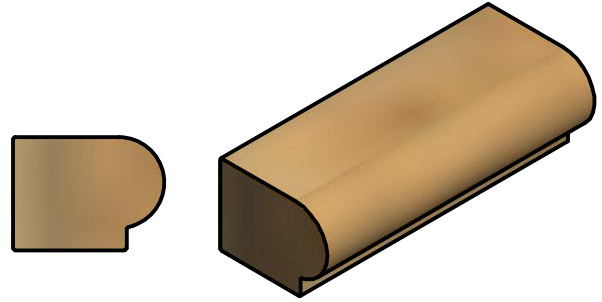
Unspecified tolerances:  
All dimensions are in millimeters  
unless otherwise stated.  
Unspecified Radii 0.2mm

Holes +/- .1mm  
Angles +/- .5 Deg  
Radii +/- .2mm

No. Dec Places +/- .5mm  
1 Dec Place +/- .2mm  
2 Dec Places +/- .1mm

All dimensions based on  
customer DWG file or  
on customer sample profile  
with dimensions rounded  
to hundredth mm.

SCALE 1 : 1



Product: QW-SB20NI - non integrated channel

Scale: 3:1

Material: WPC



This drawing should be used for illustration purposes only. It can not be used as a specification of the part.  
For more information please call +44 (0) 161 627 4222 or mailto CustomerService@quantum-ps.co.uk  
Copyright © 2015 Quantum Profile Systems Limited. All rights reserved.

Date: 23/04/2019  
Author: diane.luther  
File: QW-SB20NI.ipt