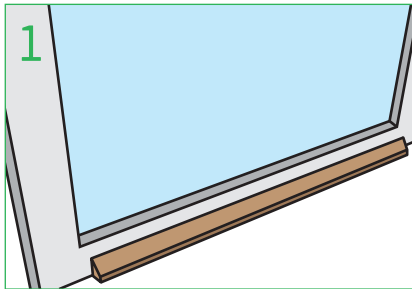


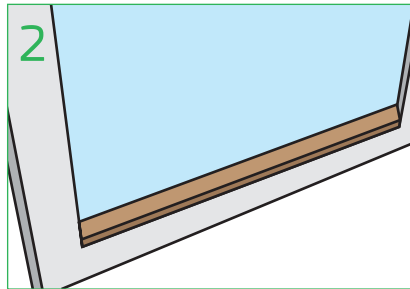
The Qwood standard range of glazing and drip beads offer a quick and effective method of dry glazing a casement window.

Required Profiles:

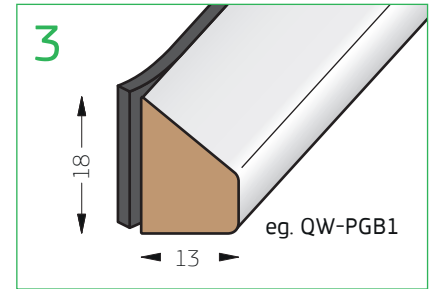
QW-PGB1	Glazing bead
QW-PGB2	Glazing bead
QW-PGB3	Glazing bead



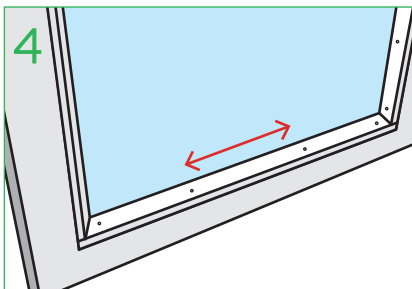
1 Cut beads to required lengths, recommend to cut top to bottom rails square and scribe the side rails.



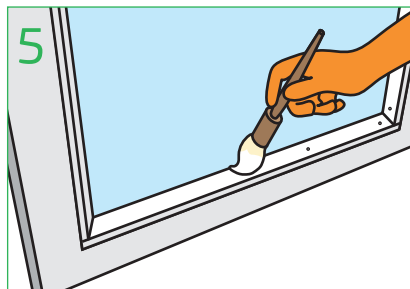
2 Check beads fit correctly in window frame. Paint before or after cutting to size.



3 Apply 2.0mm double sided glazing tape to glazing face of bead. Remove liner from glazing tape and apply beads to glazing into the frame.



4 Pin beads every 150mm to 200mm securely to frame. Pin on end of each bead for extra security.



5 Fill pin head holes. Touch up paint.

If you require any further information or assistance with the fitting of any Qwood product, please contact us:

+44 (0) 161 627 4222

info@qwood.co.uk

www.qwood.co.uk