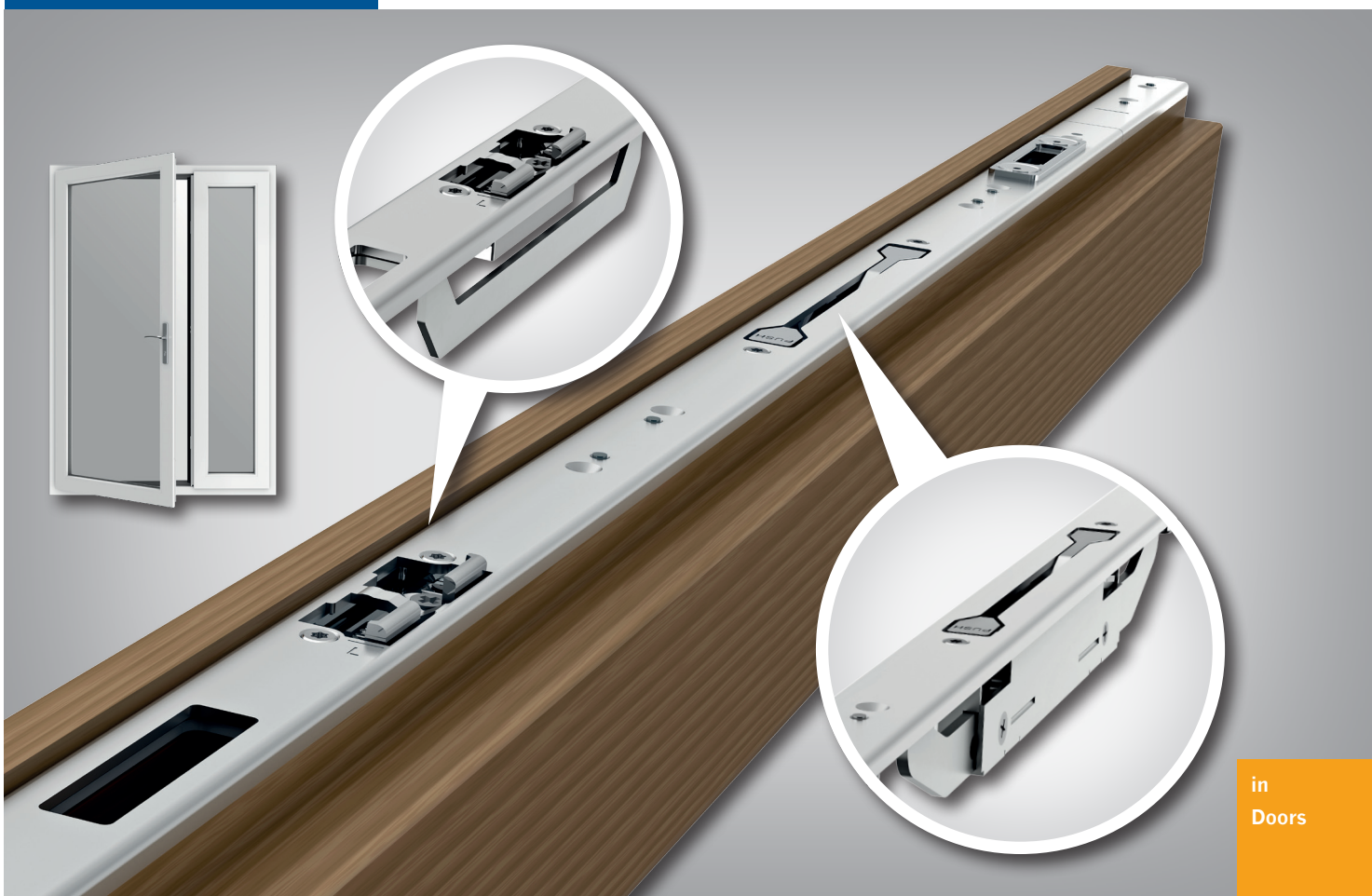


## Winkhaus FAB Slave Door Locks

For PVCu, Aluminium, Timber and Composite Doors



in  
Doors



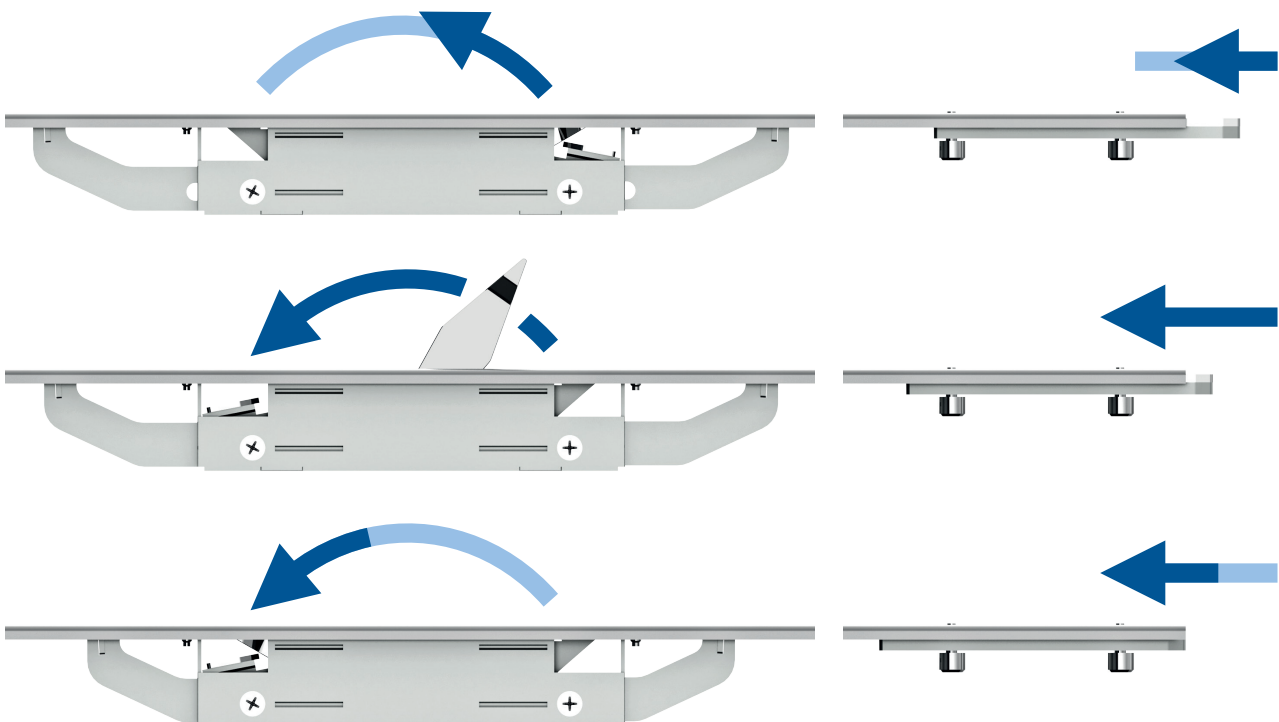
## Shootbolt keep rails with integrated shootbolts

The Winkhaus FAB slave door lock range provides a high security locking option WITHOUT the need for a security Kitemark cylinder, cylinder guard or a security handle. Operated by a flush, integrated two way lever the FAB slave lock throws two heavy duty 20mm shootbolts into the head and cill. Combined with the renowned Cobra™ or Trulock+ Multi-Point lock on the master door the locking hooks penetrate the FAB Slave lock to secure the two leaves together. No additional hook keeps are required. Substantial shootbolt keeps have +/- 2mm of adjustment for ease of operation.

Unlike conventional PVCu Double doors a dummy mullion is not required which can dramatically reduce sightlines. The FAB system requires doors with opposing eurogrooves.

With a size range from 1853mm to 2781mm the flexibility is exceptional and is ideally suited to the trend towards taller French doors and for main entrance doors with a operating side panel. These types of doors are being increasingly specified for wheelchair access or for moving large pieces of furniture in or out of the building.

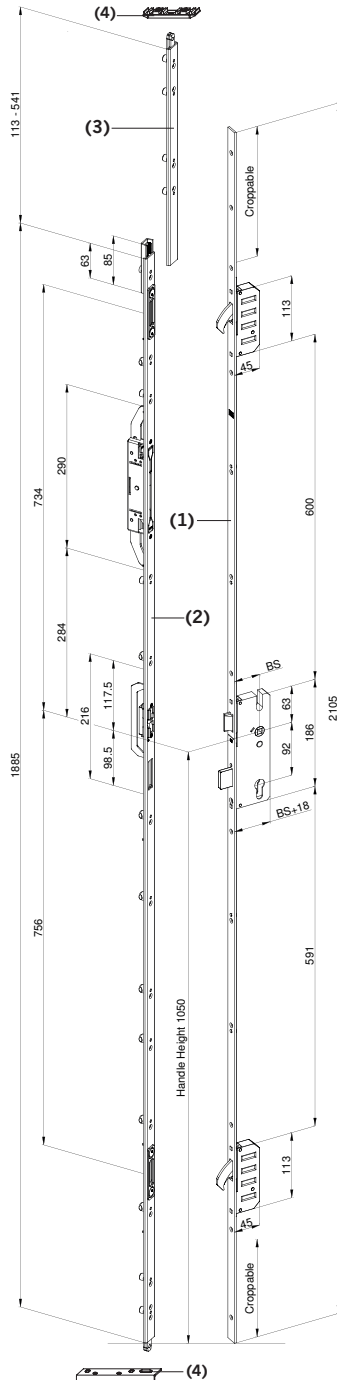
- An attractive alternative to normal slave door locks.
- Secure U26 keep rail with 20mm long laminated steel top and bottom shootbolts.
- Easily operated by the convenient operating lever.
- Quickly installed in the slave leaf of double doors (Requires doors with opposing eurogrooves).
- Removes the need to handle and cylinder.
- Ideal for double doors with irregular sash widths.
- Variants to suit Winkhaus standard, short and tall (3 Hook) locks.
- Integral bottom shootbolt giving 1050mm handle height.
- To suit sash heights 1853 - 2781mm.
- SKG \*\*





## Shootbolt keep rail U26-BN13-60 MV2 with integrated shootbolts

### Specification for standard doors, variant 60



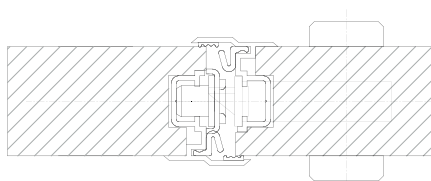
The FAB flushbolt keep rail is designed for French door systems with opposing eurogrooves

- (1) STV lock (variant 60 - standard height)
- (2) FAB Flushbolt keep rail
- (3) Shootbolt (croppable)
- (4) Shootbolt Keep

Article description	Article No.
<b>U26-BN13 Flushbolt:</b>	
For sash rebate heights: 1998 - 2426mm	
Handle position 1050mm	
Total length 1885mm	
<b>Shootbolt keep rails</b>	
U26-BN13 Flushbolt MV2 RH	5012493
U26-BN13 Flushbolt MV2 LH	5012492
<b>Shootbolts</b>	
STV-ASS Shootbolt U256/26 (113 - 256mm)	4934257
STV-ASS Shootbolt U399/26 (256 - 399mm)	4934261
STV-ASS Shootbolt U541/26 (399 - 541mm)	4934262

### Notice

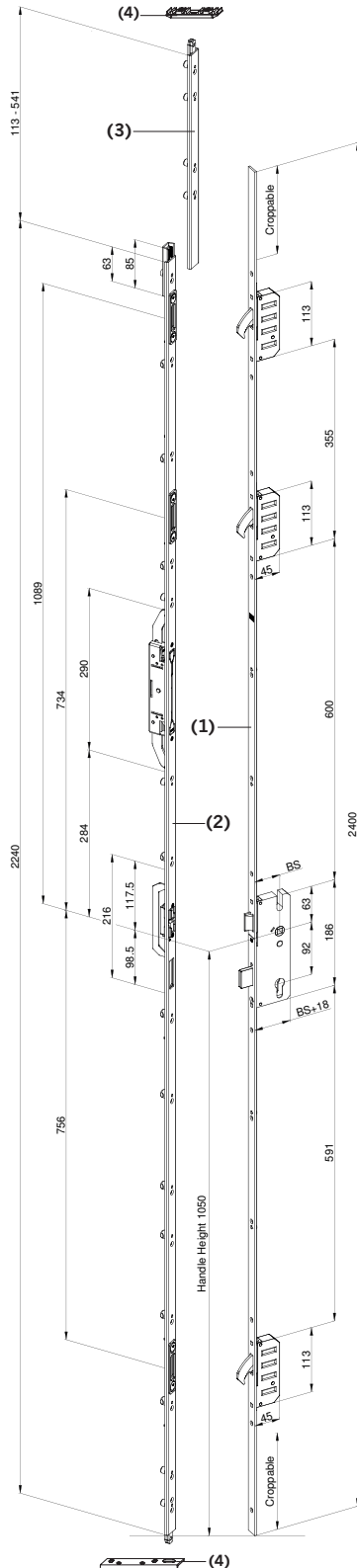
Overall for screwing use min. Ø 4,0 x 40 mm for lock and frame parts.





## Shootbolt keep rail U26-BN13-69 MV3 with integrated shootbolts

### Specification for high doors, variant 69



The FAB flushbolt keep rail is designed for French door systems with opposing eurogrooves

- (1) STV lock (variant 69 - tall height)
- (2) FAB Flushbolt keep rail
- (3) Shootbolt (croppable)
- (4) Shootbolt Keep

Article description	Article No.
<b>U26-BN13-69 Flushbolt:</b>	
For sash rebate heights: 2353 - 2781mm	
Handle position 1050mm	
Total length 2240mm	
<b>Shootbolt keep rails</b>	
U26-BN13-69 Flushbolt MV3 RH	4930191
U26-BN13-69 Flushbolt MV3 LH	4930190
<b>Shootbolts</b>	
STV-ASS Shootbolt U256/26 (113 - 256mm)	4934257
STV-ASS Shootbolt U399/26 (256 - 399mm)	4934261
STV-ASS Shootbolt U541/26 (399 - 541mm)	4934262

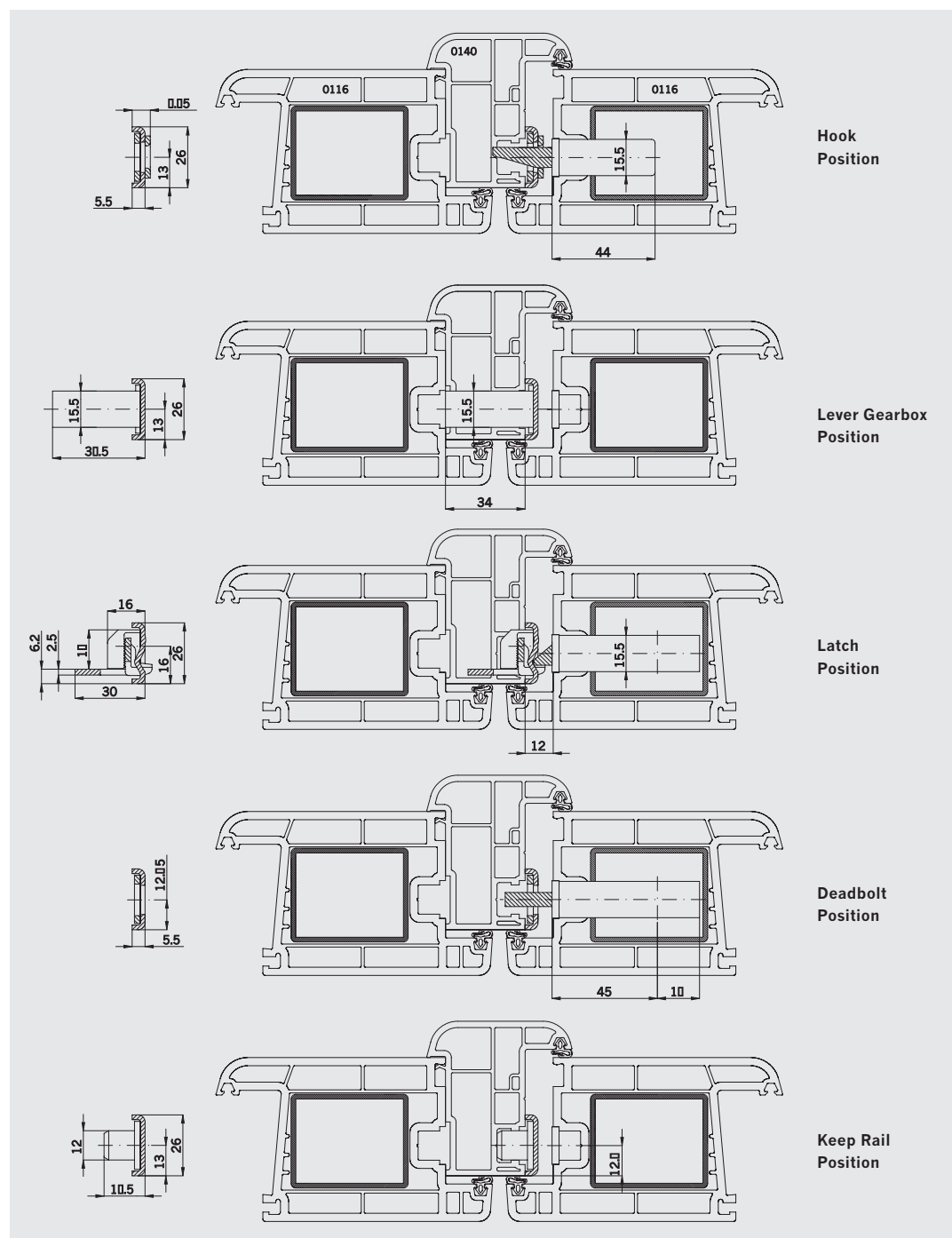
### Notice

Overall for screwing use min. Ø 4,0 x 40 mm for lock and frame parts.



## Shoot bolt keep rail U26-BN13 with integrated shoot bolts for PVCu doors

### Installation drawings



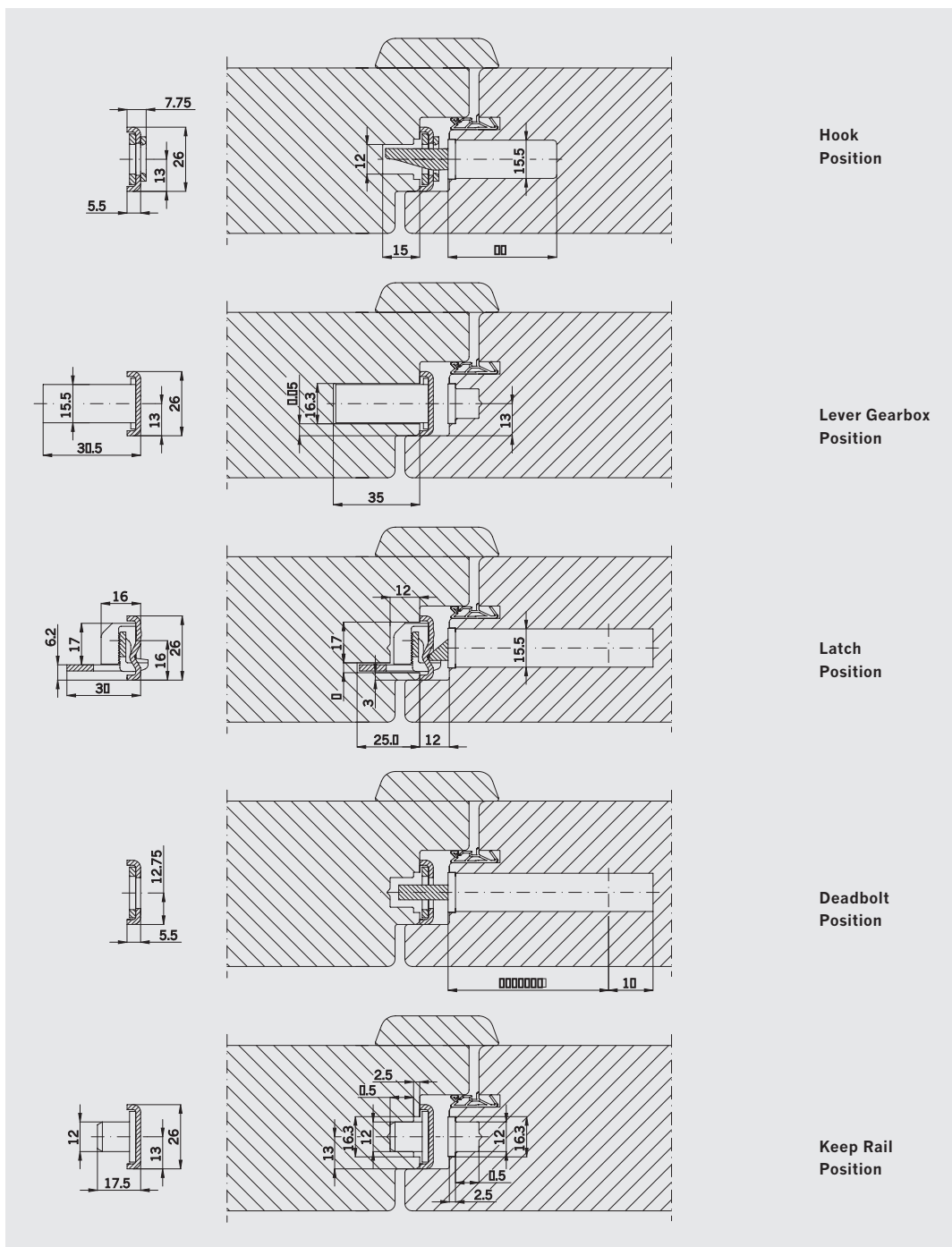
### Notice

During assembly is to be ensure, that the keep rail is supported in both sides.



## Shoot bolt keep rail U26-BN13 with integrated shoot bolts for Timber doors

### Installation drawings



### Notice

During assembly is to be ensure, that the keep rail is supported in both sides.

Winkhaus UK Ltd

2950 Kettering Parkway, Kettering,  
Northants NN15 6XZ

Tel: +44 (0)1536 316000

Fax: +44 (0)1536 416516

[www.winkhaus.co.uk](http://www.winkhaus.co.uk)

email: [enquiries@winkhaus.co.uk](mailto:enquiries@winkhaus.co.uk)